



THANK YOU FOR PURCHASING "KOSO RADAR SERIES SPEEDOMETER", LED NIGHT-BACK-LIGHTED, MULTI-FUNCTION IN ONE. EASY-WIRING. CLEAR-CONTROLLING AND EASY-USING.

NOTICE

1. THE LCD METER IS APPLY FOR DC12V.
2. FOR INSTALLATION, PLEASE FOLLOW THE STEPS DESCRIBED IN MANUAL. ANY DAMAGE CAUSED BY WRONG INSTALLATION SHALL BE IMPUTED TO THE USERS.
3. DON'T BREAK OR MODIFY THE WIRE TERMINAL. TO AVOID THE SHORT CIRCUIT, PLEASE DON'T PULL THE WIRE WHEN INSTALLING.
4. DO NOT DISASSEMBLE OR CHANGE ANY PARTS EXCLUDING THE MANUAL DESCRIPTION.
5. THE INTERIOR EXAMINATION OR MAINTENANCE SHOULD BE EXECUTED BY OUR PROFESSIONALS.
6. IF YOU FIND THE NEEDLE IS AUTO-RESET BY ITSELF, PLEASE CHECK YOUR BATTERY SITUATION. IF THE BATTERY CANT PROVIDE ENOUGH VOLTAGE, IT WILL CAUSE THE METER AUTO-RESET.

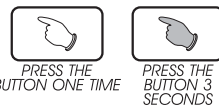
MARK MEANING:

NOTE YOU COULD GET THE INSTALLATION DETAILS FROM THE INFORMATION BEHIND THE MARK.

△ SOME PROCESSES MUST BE FOLLOWED TO AVOID THE AFFECTION CAUSED BY WRONG INSTALLATION.

△ WARNING! SOME PROCESSES MUST BE FOLLOWED TO AVOID DAMAGES TO YOURSELF OR THE PUBLIC.

△ CAUTION! SOME PROCESSES MUST BE FOLLOWED TO AVOID THE DAMAGE TO THE VEHICLE.

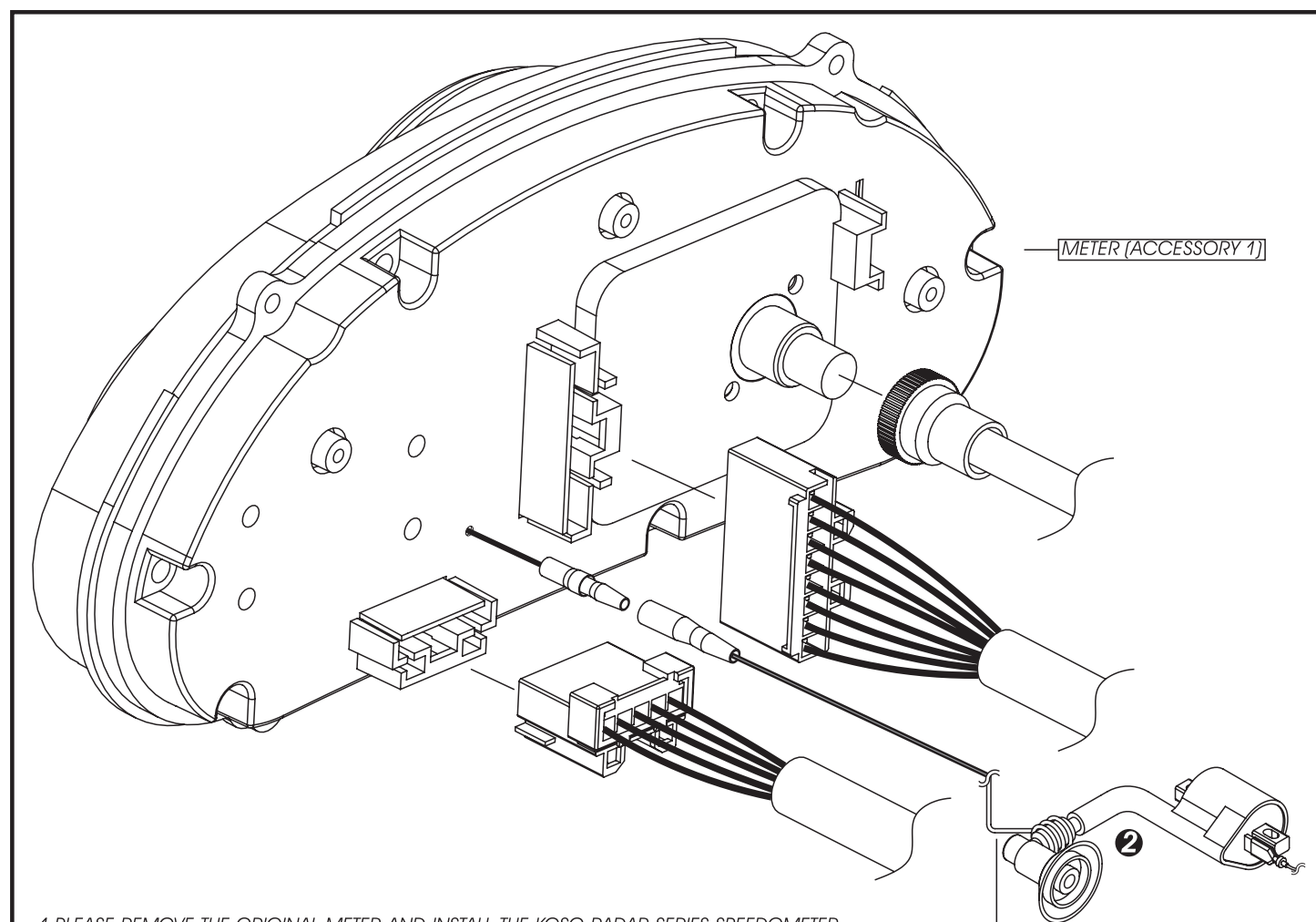


1 ACCESSORY

- 1 METER X1
- 2 RPM WIRE SET X 1
- 3 MANUAL

NOTE PLEASE CONTACT US IF THE ITEMS YOU OPEN ARE NOT THE SAME, WITH THE ABOVE-LISTED ONES.

2 INSTRUCTION OF WIRING-INSTALLATION



1. PLEASE REMOVE THE ORIGINAL METER AND INSTALL THE KOSO RADAR SERIES SPEEDOMETER, THEN FIX THE CABLE WIRE AND METER.
2. WIND THE RPM SENSOR ONTO THE SPARK PLUG CAP.

△ CAUTION! JUST WIND THE RPM WIRE ONTO THE SPARK PLUG WIRE, DO NOT CONNECT THEM! ALSO WE SUGGEST YOU TO REPLACE THE SPARK "IR" IN THE MEANTIME.

3 INSTRUCTION OF FUNCTION

THE INDICATOR LIGHT WILL DIFFER FROM DIFFERENT MODELS.

SPEEDOMETER
● DISPLAY RANGE: 0~160KM/H. 0~100 MPH.
● DISPLAY UNIT: KM/H.MPH.

SPEEDING WARNING LIGHT
● SETTING RANGE: 30~160 KM/H.
● ADJUSTING UNIT: 5 KM/H.
>REGARDING THE SETTING, PLEASE CHECK 3-1.

TEMPERATURE WARNING LIGHT
● SETTING RANGE: 60~120 °C.
● ADJUSTING UNIT: 1 °C.
>REGARDING THE SETTING, PLEASE CHECK 3-3.

TACHOMETER
● DISPLAY RANGE: 0~15000 RPM.
● DISPLAY UNIT: 100 RPM.

TACHOMETER WARNING LIGHT
● SETTING RANGE: 5000~15000 RPM.
● ADJUSTING UNIT: 100 RPM.
>REGARDING THE SETTING, PLEASE CHECK 3-2.

FUEL SYMBOL
● DISPLAY RANGE: 16 LEVELS.
● THE FUEL RESERVE SYMBOL BEGINS TO FLASH IF ONLY 3 GRIDS LEFT.

TEMPERATURE
● DISPLAY RANGE: 0~120 °C.
● DISPLAY UNIT: 1 °C.

ODO METER
● DISPLAY RANGE: 0~99999 KM.
RESET AUTOMATICALLY AFTER 99999 KM.
● DISPLAY UNIT: 1 KM.

TRIP METER
● DISPLAY RANGE: 0~999.9 KM.
RESET AUTOMATICALLY AFTER 999.9 KM.
● DISPLAY UNIT: 0.1 KM.

3-1 SPEEDING WARNING LIGHT SETTING INSTRUCTION.

IN MAIN SCREEN, PRESS DOWN THE **SELECT** & **ADJUST** BUTTON FOR 3 SECONDS TO ENTER THE SPEEDING WARNING LIGHT SETTING SCREEN.

△ CAUTION! PLEASE START THE SETTING WHEN THE MOTORCYCLE IS STOPPED(0 KM/H).

NOTE SETTING RANGE: 30~160 KM/H. ADJUSTING UNIT: 5 KM/H.

△ NOW 30 (THE NUMBER YOU WANT TO SET) & **SPEED** IS FLASHING.

NOTE HOLD DOWN THE **ADJUST** BUTTON TO INCREASE THE SETTING NUMBER FAST.

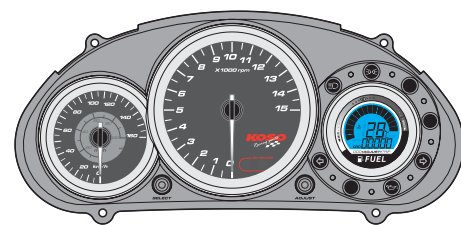
PRESS THE **ADJUST** BUTTON TO SELECT THE NUMBER YOU WANT TO SET. (NOW YOU ARE IN THE SPEEDING WARNING LIGHT SETTING SCREEN)

NOTE SETTING RANGE: 30~160 KM/H. ADJUSTING UNIT: 5 KM/H.

△ NOW 60 (THE NUMBER YOU WANT TO SET) & **SPEED** IS FLASHING.

NOTE THE SETTING SCREEN IS A CIRCLE IN ORDER AS THE FOLLOWING, THE SPEEDING WARNING SETTING> THE TACHOMETER WARNING SETTING> THE TEMPERATURE WARNING SETTING> MAIN SCREEN.

PRESS THE **SELECT** BUTTON 3 TIMES TO BACK THE MAIN SCREEN.
EX: THE SETTING IS CHANGED FROM 30KM/H TO 60KM/H.



MAIN SCREEN.

3-2 TACHOMETER WARNING LIGHT SETTING INSTRUCTION.

IN MAIN SCREEN, PRESS DOWN THE **SELECT** & **ADJUST** BUTTON FOR 3 SECONDS TO ENTER THE SPEEDING WARNING LIGHT SETTING SCREEN.

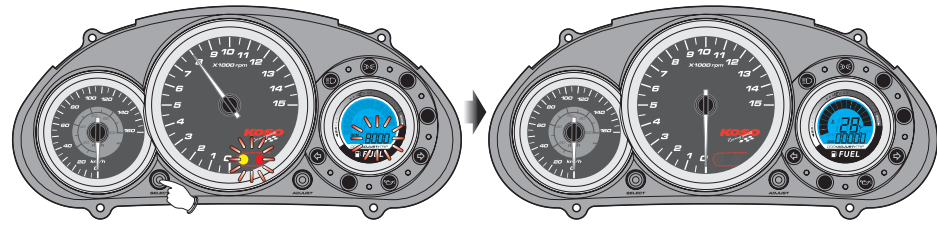
△ NOW 30 & **SPEED** IS FLASHING.

NOW IN SETTING SCREEN. PRESS THE **SELECT** & **ADJUST** BUTTON 1 TIME TO ENTER THE TACHOMETER WARNING LIGHT SETTING SCREEN.

PRESS THE **ADJUST** BUTTON TO SELECT THE NUMBER YOU WANT TO SET.

NOTE SETTING RANGE: 5000~15000 RPM. ADJUSTING UNIT: 100 RPM.

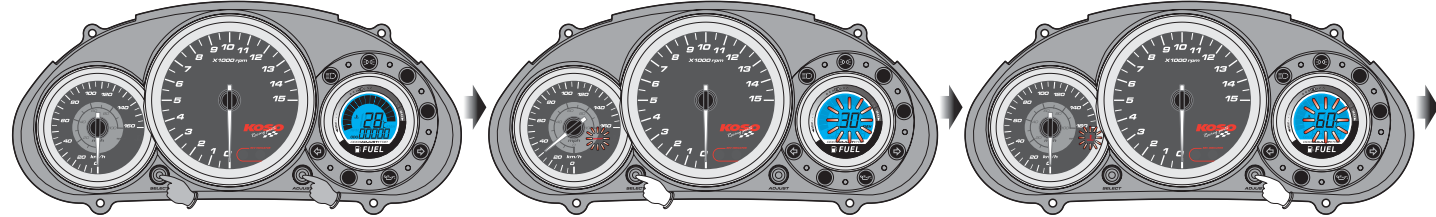
△ NOW 5000 (THE NUMBER YOU WANT TO SET) & **TACHOMETER WARNING LIGHT** IS FLASHING.



PRESS THE **SELECT** BUTTON 2 TIMES TO BACK MAIN SCREEN.
 THE MAIN SCREEN.
 EX: THE SETTING IS CHANGED FROM 5000 RPM TO 8000 RPM.

⚠ NOW **8000** (THE NUMBER YOU WANT TO SET) & **TACHOMETER WARNING LIGHT** IS FLASHING.

3-3 TEMPERATURE WARNING LIGHT SETTING INSTRUCTION.



IN MAIN SCREEN, PRESS DOWN THE **SELECT** & **ADJUST** BUTTON FOR 3 SECONDS TO ENTER THE SPEEDING WARNING LIGHT SETTING SCREEN.

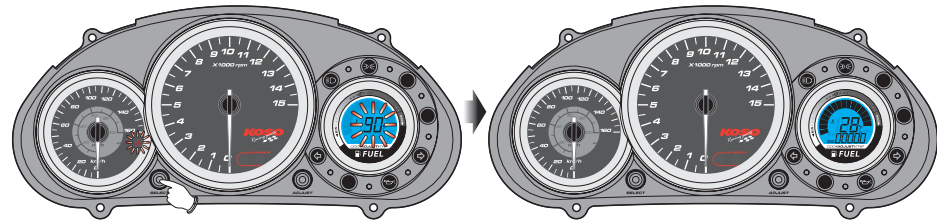
NOW IN SETTING SCREEN. PRESS THE **SELECT** BUTTON 2 TIMES TO ENTER THE TEMPERATURE WARNING LIGHT SETTING SCREEN.

PRESS THE **ADJUST** BUTTON TO SELECT THE NUMBER YOU WANT TO SET.

⚠ NOW **30** & **SPEED** IS FLASHING.

NOTE SETTING RANGE: 60~150 °C.
 ADJUSTING UNIT: 1 °C.

⚠ NOW **60** (THE NUMBER YOU WANT TO SET) & **TEMPERATURE WARNING LIGHT** IS FLASHING

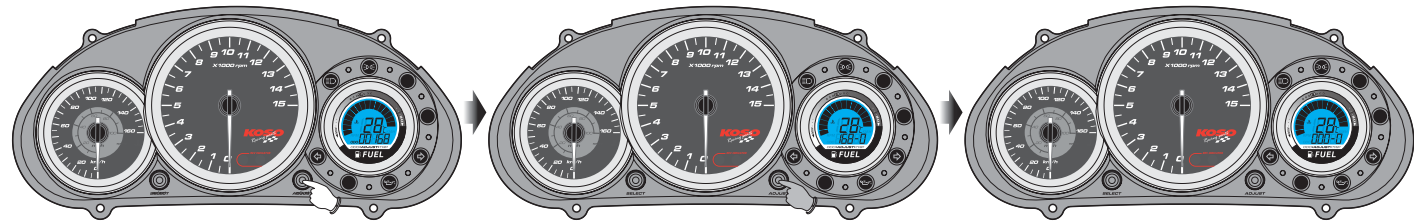


PRESS THE **SELECT** BUTTON TO BACK THE MAIN SCREEN.
 EX: THE SETTING IS CHANGED FROM 60 °C TO 90 °C.

MAIN SCREEN.

⚠ NOW **90** (THE NUMBER YOU WANT TO SET) & **TEMPERATURE WARNING LIGHT** IS FLASHING

3-4 TRIP RESET INSTRUCTION



IN MAIN SCREEN, PRESS THE **ADJUST** BUTTON TO SWITCH THE ODOMETER TO TRIP METER.

PRESS DOWN THE **ADJUST** BUTTON FOR 3 SECONDS, AND THEN THE TRIP METER WILL BE RESET.

NOW THE TRIP METER IS RESET.