

EN

S6 INSTRUCTIONS


PRECISION REV COUNTER


Thank you for purchasing the STAGE6 PRECISION REV COUNTER. Before installing and operating the instrument, please read the instructions carefully and retain them for future reference.


IMPORTANT


1. The instrument requires a 12 V DC supply for the backlight; the instrument itself is run by the inner battery.
2. To install the instrument, please follow the steps as described in the manual. For any damage caused by incorrect installation, the user shall be held responsible.
3. To avoid short-circuits, please don't pull the wires during installation. Don't break or modify the wire terminals.
4. Do not disassemble or change any parts other than the ones referred to in this manual.
5. All interior examination or maintenance should be carried out by our professionals.

Explanation of symbols

 **NOTE** Information after this symbol will help you understand essential steps

 Follow these instructions accurately to avoid damage.

 **WARNING**
Some instructions must be followed to avoid damage to yourself or others.

 **CAUTION**
Some instructions must be followed to avoid damage to the vehicle.



Press the button once

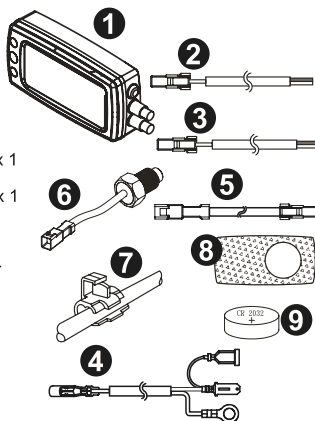
EN

S6 INSTRUCTIONS

PRECISION REV COUNTER

1.1 Accessories

- 1 Instrument x 1
- 2 Power wire x 1
- 3 RPM wire (type A) x 1
- 4 RPM wire (type B) x 1
- 5 Sensor wire x 2
- 6 TH-01_PT1/8 water temp. sensor x 2
- 7 Connecting clip x 2
- 8 Velcro x 1
- 9 Battery x 1

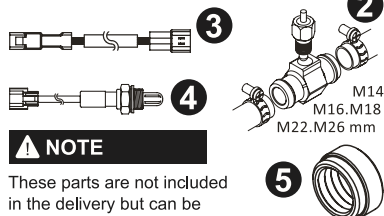


NOTE

Please contact your local distributor if the items you have received are different from the ones listed above.

1.2 Optional Accessories

- 1 Oil temp. sensor adapter
- 2 Water temp. sensor adapter
- 3 Extension cable
- 4 Oxygen sensor
- 5 Welding sleeve



M12 X P1.5 X 15L
M14 X P1.25 X 15L
M14 X P1.5 X 15L
M16 X P1.5 X 15L
M18 X P1.5 X 15L
M20 X P1.0 X 15L
M20 X P1.5 X 15L

M14
M16.M18
M22.M26 mm

NOTE

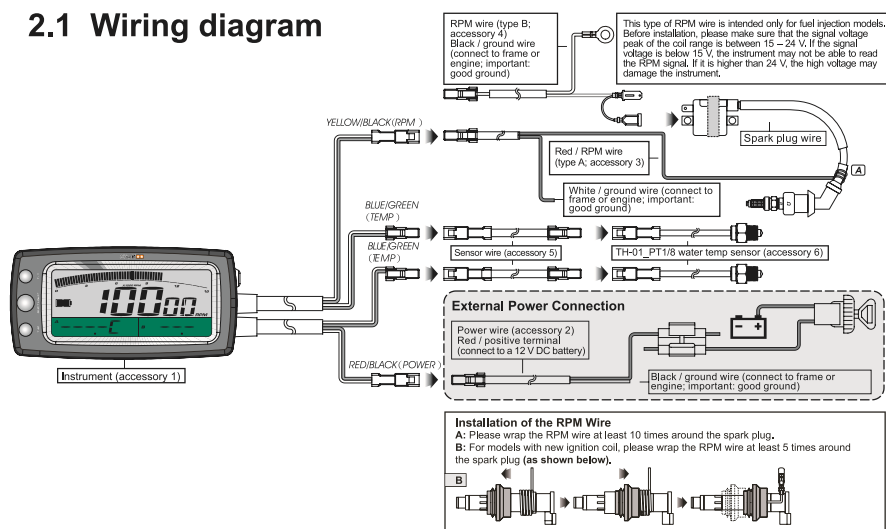
These parts are not included in the delivery but can be purchased separately. For further information, please contact your local distributor.

EN

S6 INSTRUCTIONS

PRECISION REV COUNTER

2.1 Wiring diagram



EN

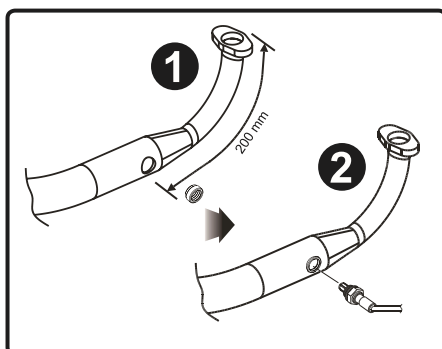
S6 INSTRUCTIONS

PRECISION REV COUNTER

2.2 Installation of the Oxygen Sensor

1. Drill a 22.5 mm hole into the downpipe of the exhaust, 200 mm away from the exhaust flange. Weld the welding sleeve into the hole.

2. Mount the oxygen sensor into the welding sleeve.

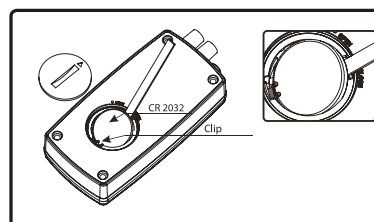


2.3 Replacing the Battery

Open the battery cover and remove the battery using a slotted screwdriver.

NOTE

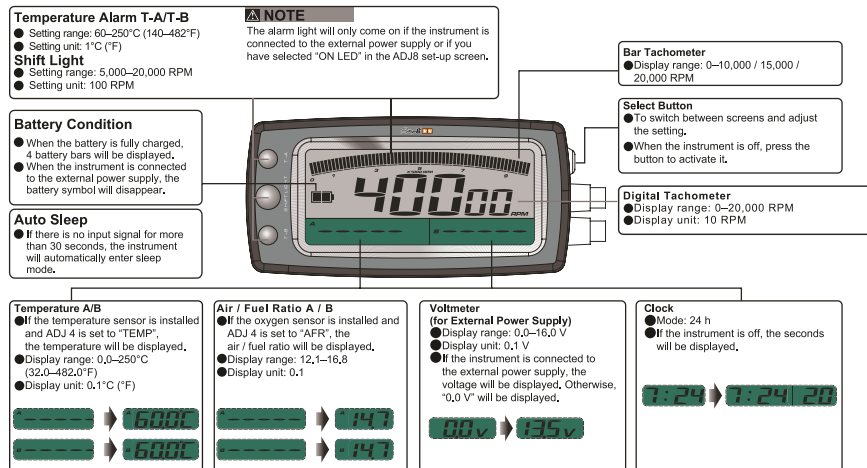
Please be sure to use the proper tool when removing the battery in order to avoid damaging the clip.



S6 INSTRUCTIONS

PRECISION REV COUNTER

3.1 The Display

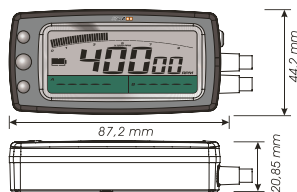


EN

S6 INSTRUCTIONS

PRECISION REV COUNTER

3.2 Functions and Specifications



NOTE

Design and specifications are subject to change without notice!

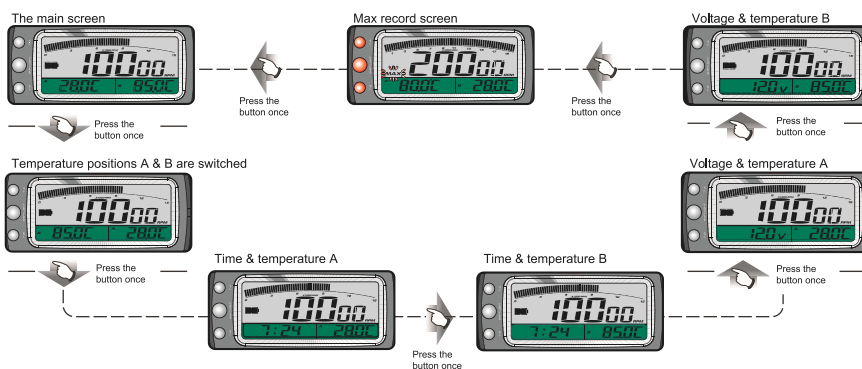
● Digital tachometer	Display range: 0–20,000 RPM	Display unit: 10 RPM
● Bar tachometer	Display range: 0–10,000/15,000/20,000 RPM	
○ Display interval	< 0,5 seconds	
○ Shift light	Setting range: 5,000–20,000 RPM	Setting unit: 100 RPM
○ Max RPM record	Display range: 0–10,000 / 15,000 / 20,000 RPM	
○ Stroke / cylinder setting	2-stroke: 1, 2, 3, 4 cylinders 4-stroke: 1, 2, 3, 4, 5, 6, 8, 10, 12 cylinders	
● Thermometer	Display unit: °C or °F	
● Thermometer A/B	Display range: 0–250°C (32–482°F)	Display unit: 0,1°C (°F)
○ Display interval	< 0,5 seconds	
○ Temperature warning	Setting range: 60–250°C (140–482°F)	Setting unit: 1°C (°F)
○ Max. temp. record	Display range: 0–250°C (32–248°F)	
○ Air / fuel ratio	Display range: 12,1–16,8	Display unit: 0,1
○ Voltmeter	Display range: DC 0–16,0 V	Display unit: DC 0,1 V
● Clock	24h	
● Battery type	CR 2032	
● Operating voltage	DC 12 V	
● Operating temperature	-10 – +60° C	
● Standard	JIS D 0203 S2	
● Instrument size	87,2 x 44,2 x 20,85 mm	
● Instrument weight	ca. 82 g	
● Warning lights	○ Temperature alarm T-A (red) ○ Shift light (red) ○ Temperature alarm T-B (red)	

S6 INSTRUCTIONS

PRECISION REV COUNTER

4.1 Switching Between Screens

- Select the desired function combination by pressing the button. The functions are displayed as follows:



EN

S6 INSTRUCTIONS

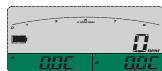
PRECISION REV COUNTER

4.2 Resetting the max record

In the max record screen, press and hold the button for 3 seconds to reset the record.



4.3 Setting Up the Rev Counter



Stroke/cylinder setting

- In the main screen, press and hold the button for 3 seconds to enter set-up mode. You can switch between the different set-up screens (ADJ 1 to ADJ 8) by pressing the button briefly. In order to enter the respective screen, simply press and hold the button for 3 seconds.



- When ADJ 1 appears on the screen, press and hold the button for 3 seconds to enter the ADJ 1 set-up screen.
- Press the button once to change the stroke setting.
- E.g.: The setting is changed from 2C (two-stroke) to 4C (four-stroke).



NOTE You can select 2C (two-stroke) or 4C (four-stroke).

⚠ The stroke is flashing.

⚠ CAUTION!

- Be sure to enter the correct stroke and cylinder numbers.
- If the input is incorrect, the RPM output will be incorrect, too.
- Engines that ignite every 360° are defined as two-stroke and engines that ignite every 720° are defined as four-stroke.
- Four-stroke engines with one cylinder that ignite every 360° will have to be treated just like two-stroke engines with one cylinder.

EN

S6 INSTRUCTIONS

PRECISION REV COUNTER

- Press and hold the button for 3 seconds to switch to the cylinder set-up.
- Press the button to change the setting.
- E.g.: The setting is changed from 1P (1 cylinder) to 8P (8 cylinders).



! The setting is flashing.

NOTE

For two-stroke engines, you can select 1, 2, 3 or 4 cylinders.
For four-stroke engines, you can select 1, 2, 3, 4, 5, 6, 8, 10 or 12 cylinders.

- Press and hold the button for 3 seconds to return to the ADJ 1 set-up screen.

Tachometer range setting



- Press the button once to switch to the ADJ 2 set-up screen, where you can select the tachometer range.
- Press and hold the button for 3 seconds to enter the set-up screen.
- Press the button to select the tachometer range.
- E.g.: The tachometer range is changed from 0-10,000 RPM to 0-20,000 RPM.



! The setting is flashing.

NOTE

The tachometer ranges are: 0-10,000 RPM / 15,000 RPM / 20,000 RPM

- When you have finished the set-up, press and hold the button for 3 seconds to return to the ADJ 2 set-up screen.

S6 INSTRUCTIONS

PRECISION REV COUNTER

Shift light setting



- Press the button once to switch to the ADJ 3 set-up screen, where you can set the shift light.
- Press and hold the button for 3 seconds to enter the set-up screen.
- Press the button to select the RPM value at which the shift light is to come on.
- The set-up starts with the left digit; to move to the next digit, press and hold the button for 3 seconds.
- Example: The setting is changed from 5,000 RPM to 9,500 RPM.



NOTE Setting range: 5,000 - 20,000 RPM Setting unit: 100 RPM

- When you have finished the set-up, press and hold the button for 3 seconds to return to the ADJ 3 set-up screen.

A/B sensor setting



- Press the button once to switch to the ADJ 4 set-up screen, where you can adjust the A/B sensor setting.
- Example: You want to use the A/F ratio function and connect the lambda sensor to sensor A.
- Press and hold the button for 3 seconds to enter the setup screen.
- Press the button once to switch the setting from TEMP to AFR.



- Example: You want to use the A/F ratio function and connect the lambda sensor to sensor B.
- Press and hold the button for 3 seconds to enter the setup screen.
- Press the button once to switch the setting from TEMP to AFR.



- When you have finished the set-up, press and hold the button for 3 seconds to return to the ADJ 4 set-up screen.

S6 INSTRUCTIONS

PRECISION REV COUNTER

Temperature unit setting



- Press the button once to switch to the ADJ5 set-up screen, where you can select the temperature unit. (If both sensors A and B are set to AFR, the instrument will skip the ADJ5 set-up screen and jump to ADJ6 directly .)
- Press and hold the button for 3 seconds to enter the set-up screen.
- Press the button to select the unit (° C or ° F)
- E.g.: The setting is changed from ° C to ° F. ♦



⚠ The setting is flashing.

- When you have finished the set-up, press and hold the button for 3 seconds to return to the ADJ5 set-up screen.

Temperature warning



- Press the button once to switch to the ADJ6 set-up screen, where you can set the temperature warning.
- Press and hold the button for 3 seconds to enter the temperature A warning set-up. (If the sensor A is set to AFR, the set-up screen will directly jump to the temperature B warning set-up screen.)
- Press and hold the button for 3 seconds to move to the digit you want to change.
- Press the button to change the digit.
- E.g.: The temperature warning is changed from 100° C to 105° C. ♦



⚠ The setting is flashing.

- Press and hold the button for 3 seconds to enter the temperature B warning set-up. (If the sensor B is set to AFR, the set-up screen will directly jump to the ADJ7 clock set-up screen.)
- Press and hold the button for 3 seconds to move to the digit you want to change.
- Press the button to change the digit.
- E.g.: The temperature warning is changed from 100° C to 205° C. ♦



⚠ The setting is flashing.

- When you have finished the set-up, press and hold the button for 3 seconds to return to the ADJ6 set-up screen.

NOTE

Display range:
6 0-250° C (140-48 2° F)
Display unit: 1° C (° F)

S6 INSTRUCTIONS

PRECISION REV COUNTER

Clock setting



- Press the button once to switch to the ADJ7 set-up screen, where you can set the clock.
- Press and hold the button for 3 seconds to enter the set-up screen.
- Press and hold the button for 3 seconds to move to the digit you want to change.
- Press the button to change the digit.
- E.g.: The time is changed from 00:00 to 14:05.



! The setting is flashing.

- When you have finished the set-up, press and hold the button for 3 seconds to return to the ADJ7 set-up screen.

Alarm light setting



- Press the button once to switch to the ADJ8 set-up screen, where you can set the alarm light.
- Press and hold the button for 3 seconds to enter the set-up screen.
- Press the button to adjust the setting.
- E.g.: The setting is changed from "Auto LED" to "On LED".



! The setting is flashing.

NOTE Auto LED: The warning light will function only when the external power is connected.
On LED: The warning light will function all the time.

- When you have finished the set-up, press and hold the button for 3 seconds to return to the ADJ8 set-up screen.
- Press the button once to return to the main screen.

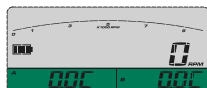
EN

S6 INSTRUCTIONS

PRECISION REV COUNTER

▼ The main screen

● You are now back in the main screen.



5 Trouble shooting

The following problems do not necessarily mean that the instrument is faulty. Please try the following steps before sending it in for repair.

Problem	Check item	Problem	Check item
Backlight doesn't work.	Make sure that the voltage of your battery is 12 V DC.	No or incorrect tachometer reading.	- Make sure that the RPM sensor wiring is connected correctly. - Check whether the spark plug is „R“ type. If not, replace the spark plug. - Check the settings (read 4.3 in the manual)
Instrument displays incorrect information.	The inner battery (CR2032) may be low. -> Please replace the battery. The battery may be inserted incorrectly. -> Please check.	No or incorrect temperature reading.	Please check the sensor wiring.
Incorrect clock reading.	The inner battery (CR2032) may be low. -> Please replace the battery.		

If you still can't solve the problem with the steps above, please contact your local distributor.